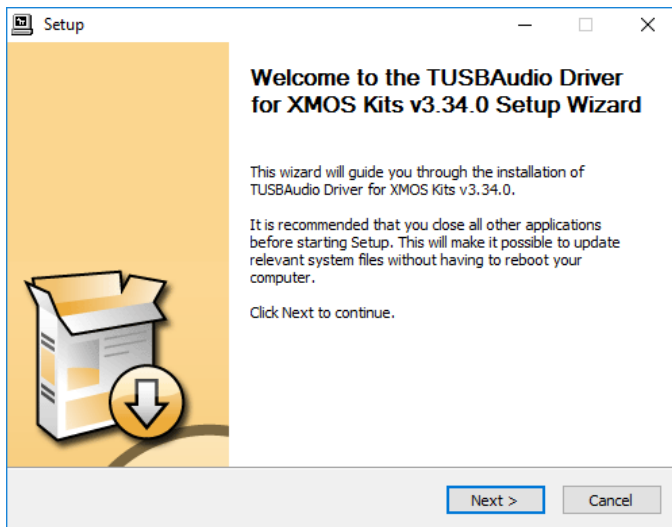
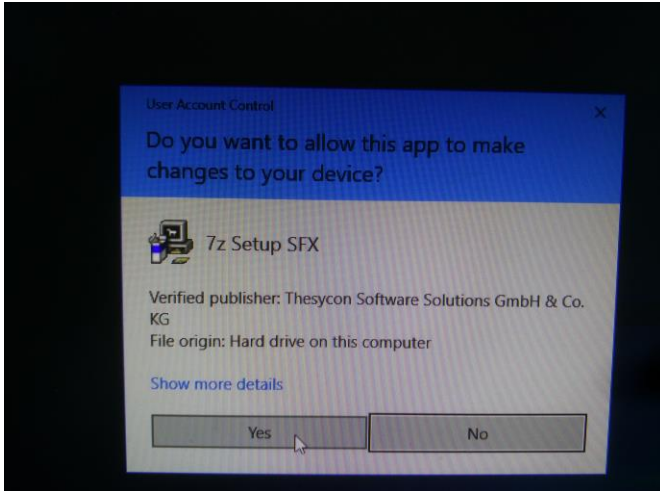
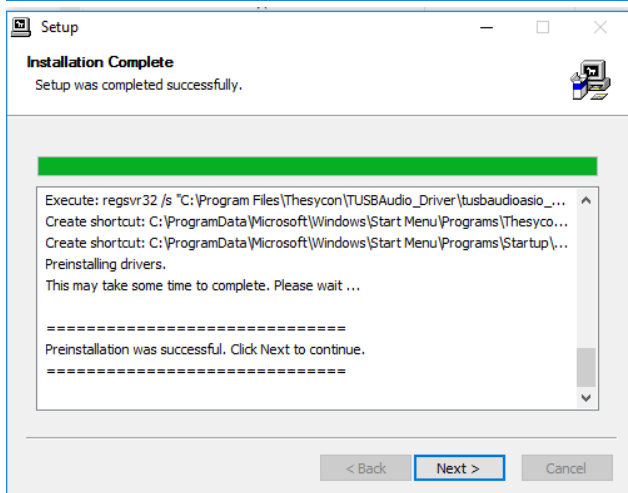
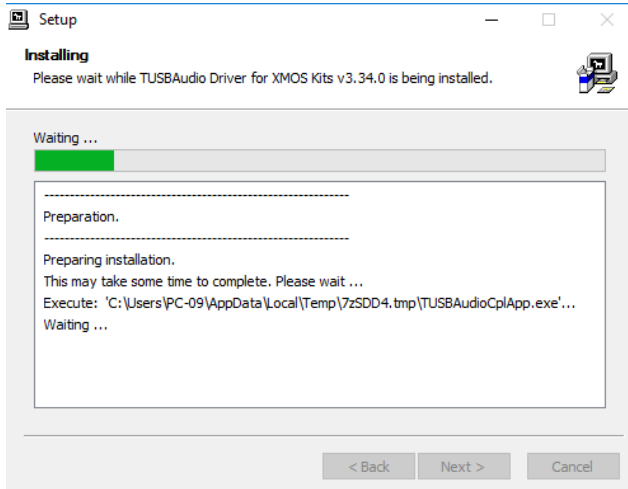
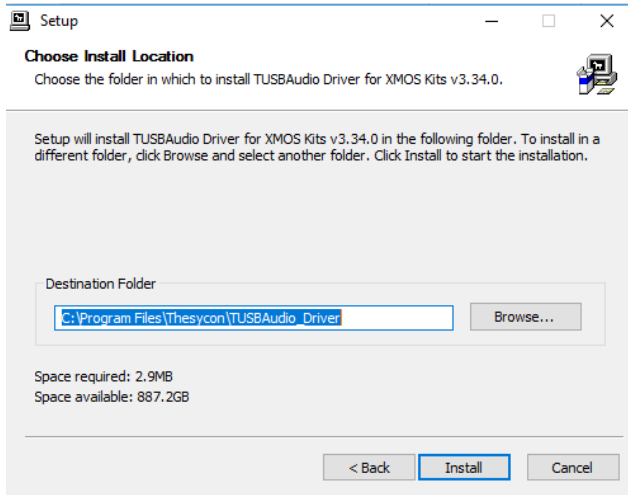


Setting up Manual for USB Driver

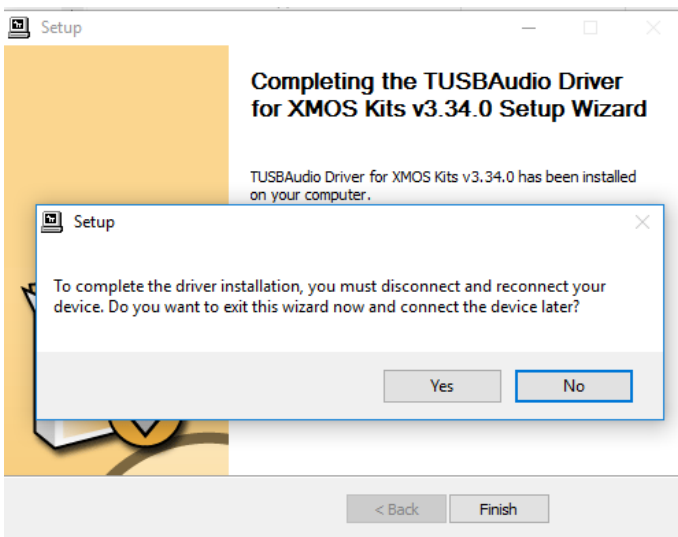
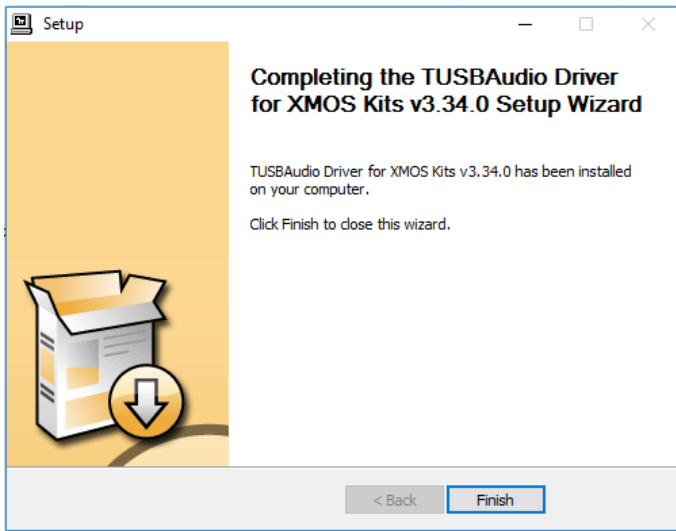
1. Unzip the downloaded zip file.
2. Double click XMOS_EVAL_KITS_DriverSetup_V3.34.0.exe. Click Yes to continue.



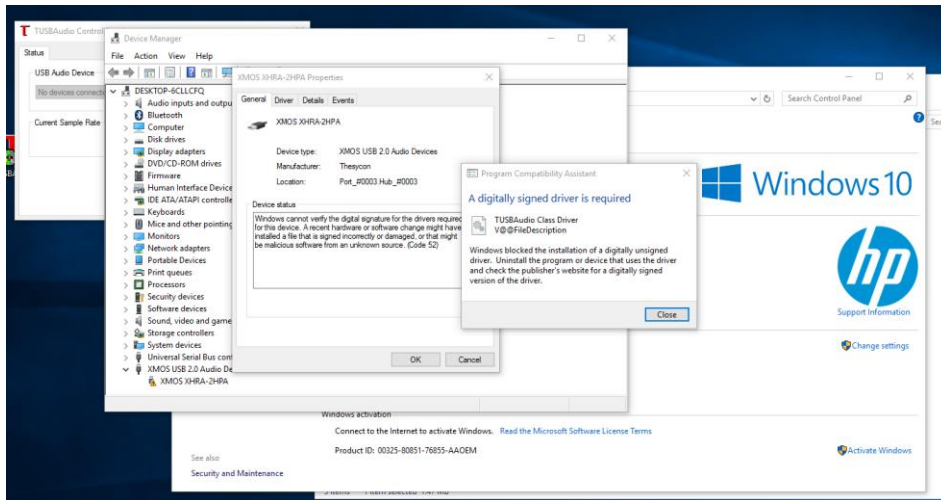
3. Follow the Setup Wizard. We recommend using the default setup path, and do not change the setting of destination folder.



4. Click Finish and click Yes to exit the setting up wizard.



For Win 10 system users, you will find

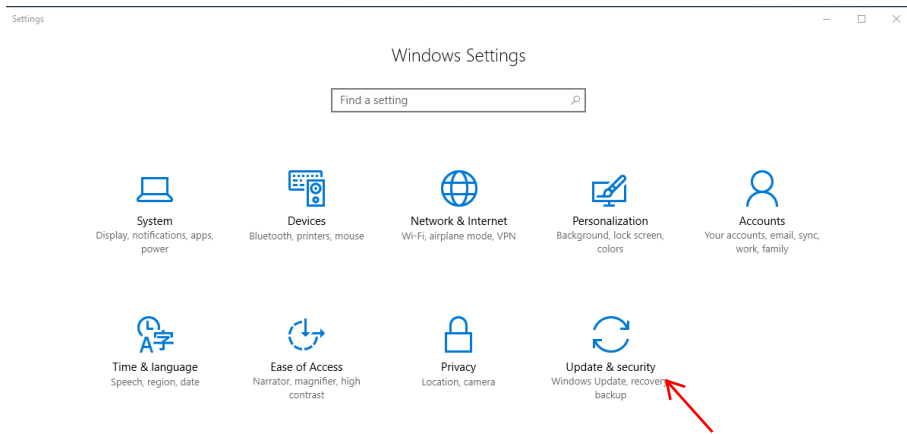


Just need a few more steps to finish the setup.

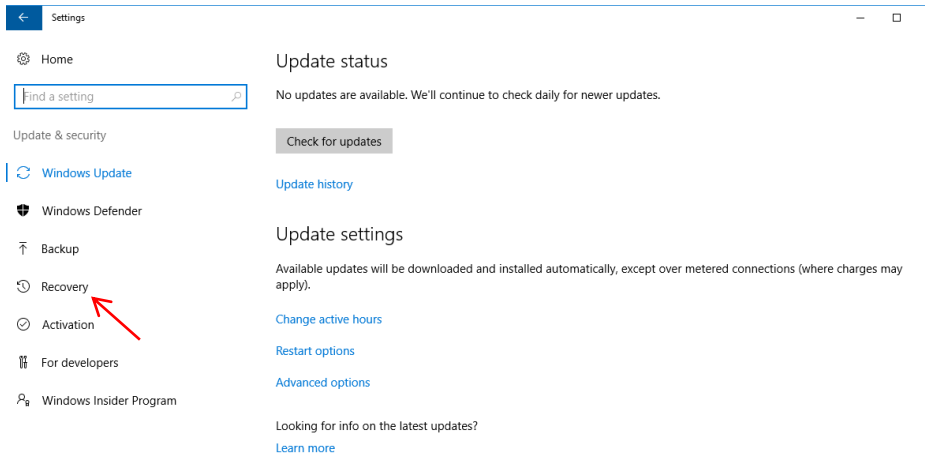
1. Press Windows Key, find and click setting.



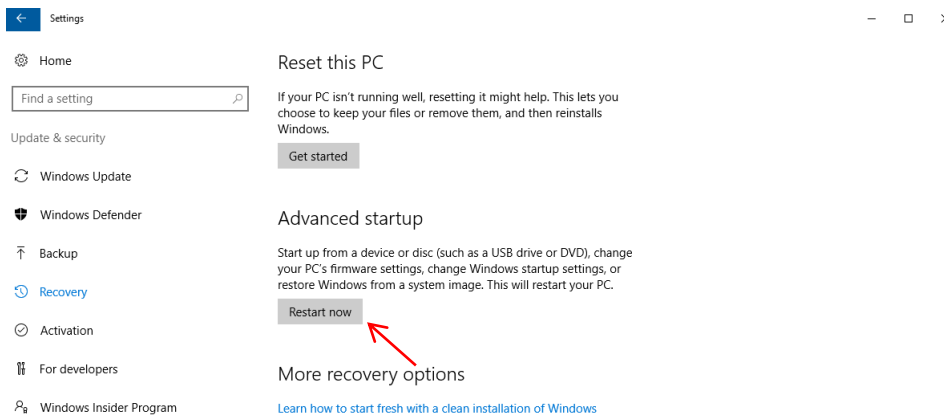
2. Click Update & Security



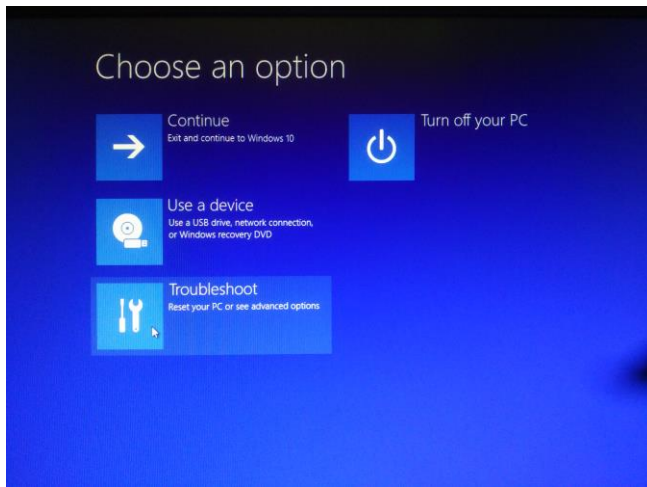
3. Click Recovery



4. Click Restart now under Advanced startup



5. Choose Troubleshoot



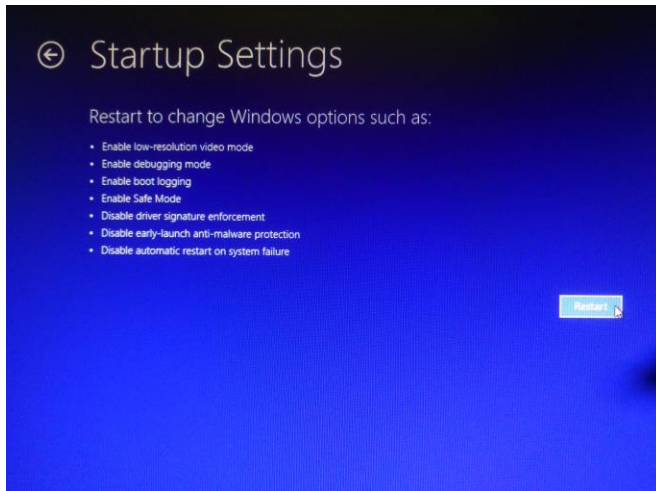
6. Choose Advanced options



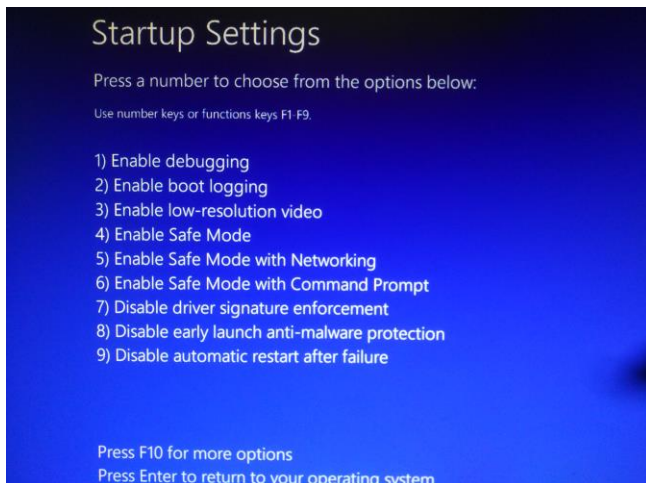
7. Choose Startup Settings



8. Click Restart



9. Press number 7 on the keyboard



10. The computer will be restarted.

11. Click Windows key and find red T sign from of the driver, and start enjoy.

